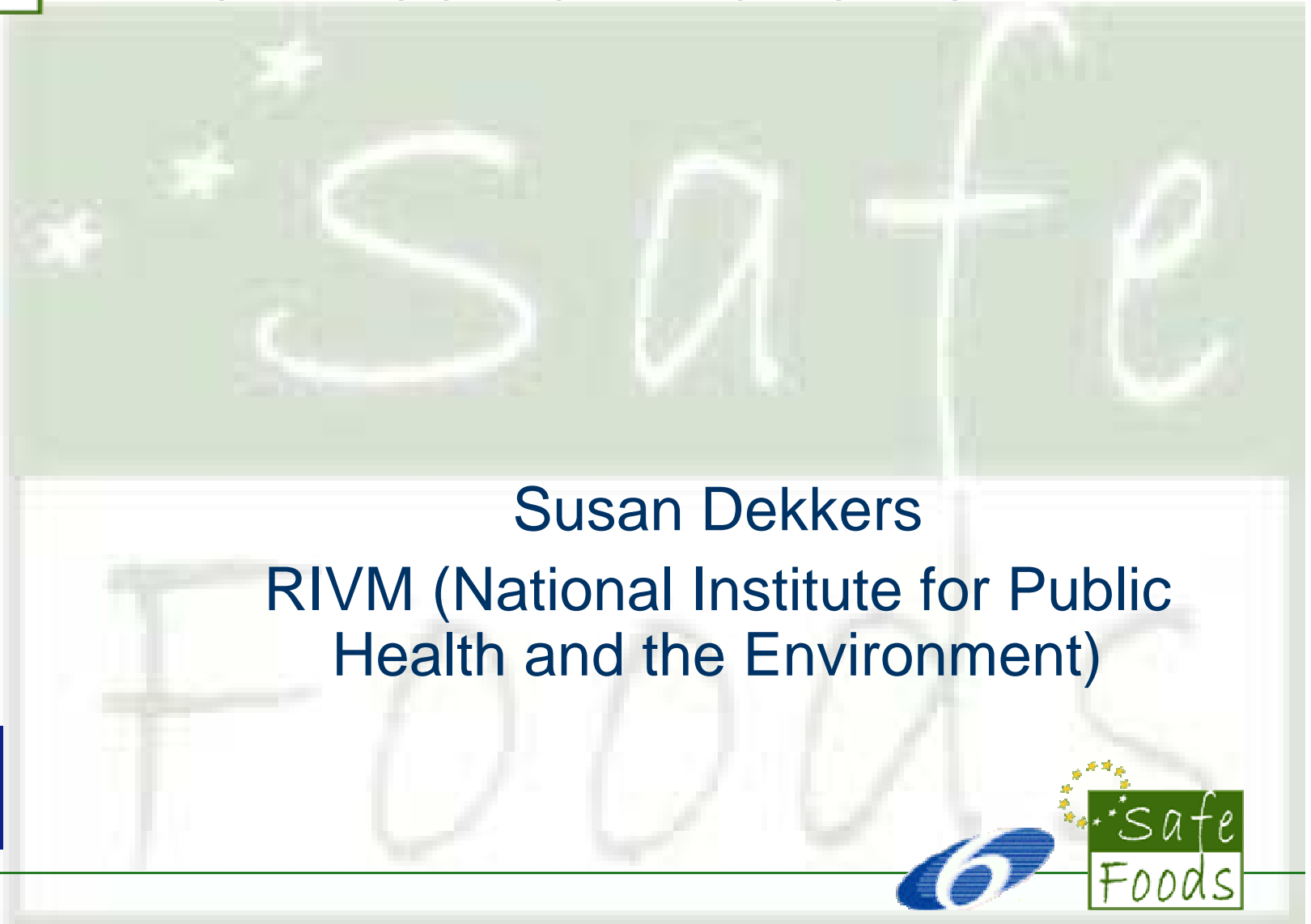




# Dioxin contamination of milk



Susan Dekkers

RIVM (National Institute for Public Health and the Environment)



# Dioxins

- What are dioxins?
  - PCDDs
  - PCDFs
  - Dioxine-like PCBs
- Hazards of dioxins
  - Lipophilic
  - Acute toxicity
  - Chronic toxicity



[www.teletet.org](http://www.teletet.org)

# Incident

- Dioxins in composite milk sample
  - Above legal threshold levels
  - Sampled during monitoring programme
- Traced back to
  - Animal feed → potato peels → marl clay used in potato processing

[www.thegreenerery.com](http://www.thegreenerery.com)

## Measures taken

- Identify all farms that received contaminated animal feed
  - Block movement of animals, feed and milk
  - Analyse milk and meat
- Inform other member state (RASFF)
- Inform German Government
  - Only use of marl clay in ceramics

# Recommendations

- Precaution in animal food production chain
- Management of crisis situation
- Renew inventory of technical auxiliary materials

[www.idealwebtools.com](http://www.idealwebtools.com)

# Task for participants

## ■ Questions

- Type of hazard
- Signals for early identification
- Measuring and monitoring
- Management measures
- Possibilities for improvement
- Use example for other emerging risks



# Assignment



[www.cs.up.ac.za](http://www.cs.up.ac.za)

# Answers

- Type of hazard
  - Known but new way of contamination
  - Unlikely to re-occur
- Signals for early identification
  - New production process potato-processing
  - Dioxins in marl clay are not new
- Measuring and monitoring
  - Dioxins in milk and meat can be measured
  - Monitoring using random samples already takes place



# Answers

- Management measures
  - Trace back and block suspected products
  - Inform (inter)national authorities and inspections
  - Destruction of products
  - Inform consumers about the measures taken
- Possibilities for improvement
- Use example for other emerging risks
  - Changing production process
  - Using marl clay

**Thanks!**  
**Any questions?**

